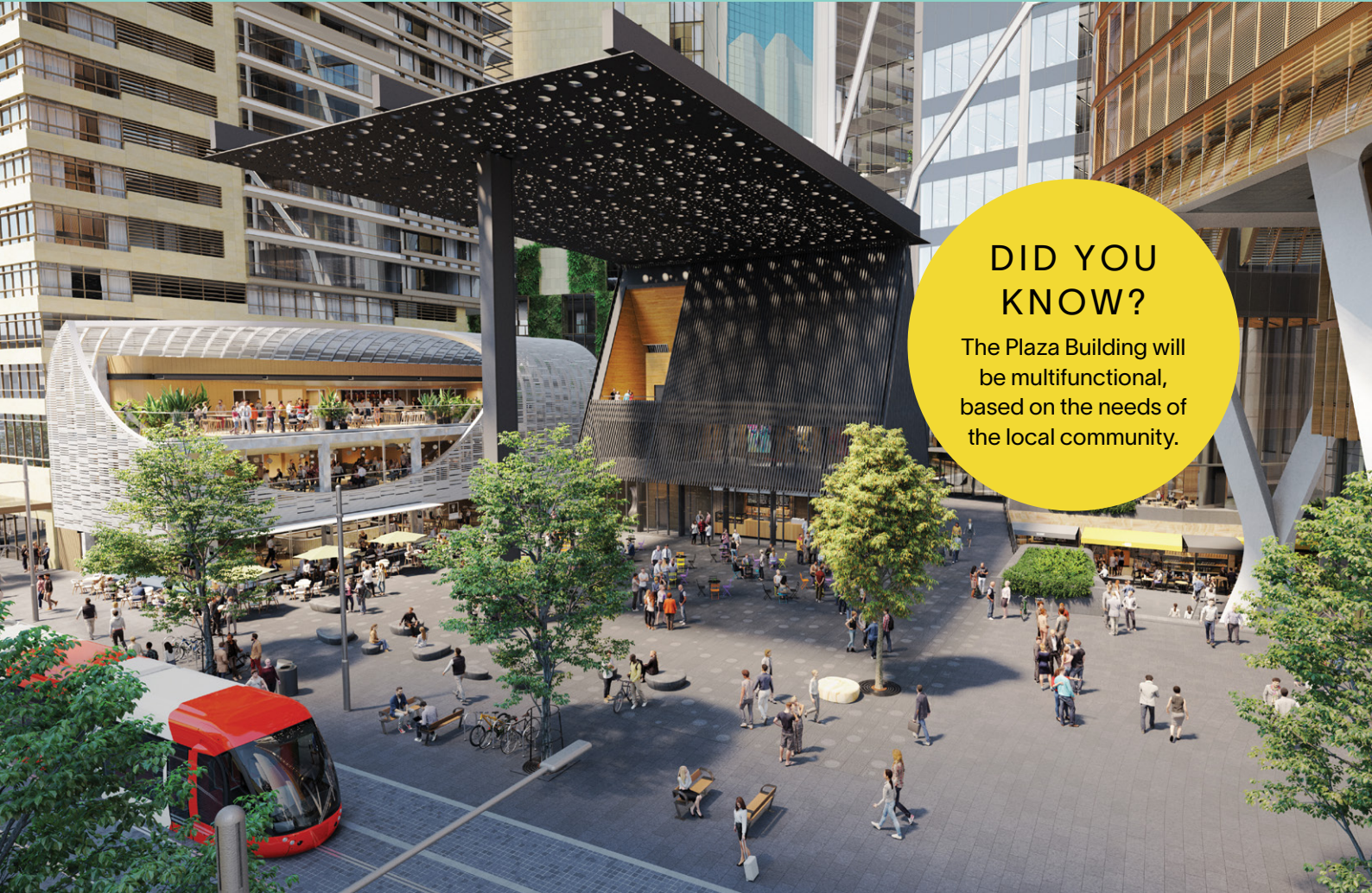


SYDNEY PLACE QUARTERLY UPDATE

Apr - Jun
2020



DID YOU KNOW?

The Plaza Building will be multifunctional, based on the needs of the local community.

Plaza Building and Public Spaces Gain Planning Approval

The Development Application has been approved on 1 April by the Council of the City of Sydney Local Planning Panel for a new public square, Plaza Building and public artwork as part of the Sydney Place development at 180 George Street, Sydney.

The Plaza Building will accommodate a wide range of uses and is designed to evolve over time based on the needs of the local community. The inclusive building and suspended artwork that will sit 20 metres above the ground was designed by Adjaye Associates and award-winning Sydney-based contemporary Aboriginal artist Daniel Boyd.

CONTACT US

1300 092 646 | Community Information Line
sydneyplace@lendlease.com | www.sydneyplace.com

Sydney Pl.

 **lendlease**

Welcome Crane Tower 1

Our second crane, Tower Crane 1 (TC1), was successfully installed early this year. The team worked efficiently and safely through some hot weather conditions to assemble (with the help of our existing Tower Crane 2) to complete the installation in five days.

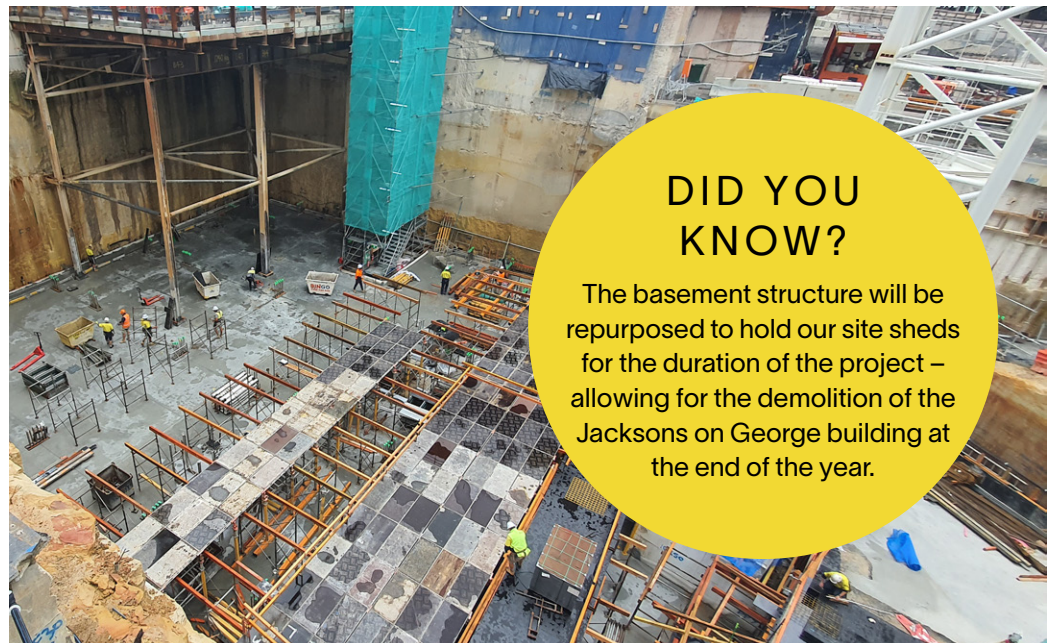
TC1 is a Favelle Favco M860D Heavy Lift Luffing Crane. It's freestanding at a height of 62 metres and will climb to a final height of 268 metres. It has a safe working load of 96 tonnes and will be used for all major steel structure installation.



Basement Construction Progresses

In March, we saw the removal of the last excavator signalling the end of excavation. Construction work on site is now largely focused on the basement structure and continuing the core structure. At the Pitt Street end of the site, two of our first basement slabs have been poured and will house the new electrical substation. We are now preparing to remove the Pitt Street platform to make way for the lower ground slab.

At the George Street end of the site, all on-ground basement slabs for B3 level and a carpark ramp have been poured, while formwork has been completed for our B2 level suspended slabs. The basement will now progressively be constructed around the tower jumpforms and back to Pitt Street and George Street levels in the coming months.



DID YOU KNOW?

The basement structure will be repurposed to hold our site sheds for the duration of the project – allowing for the demolition of the Jacksons on George building at the end of the year.

CONTACT US

1300 092 646 | Community Information Line
sydneyplace@lendlease.com | www.sydneyplace.com

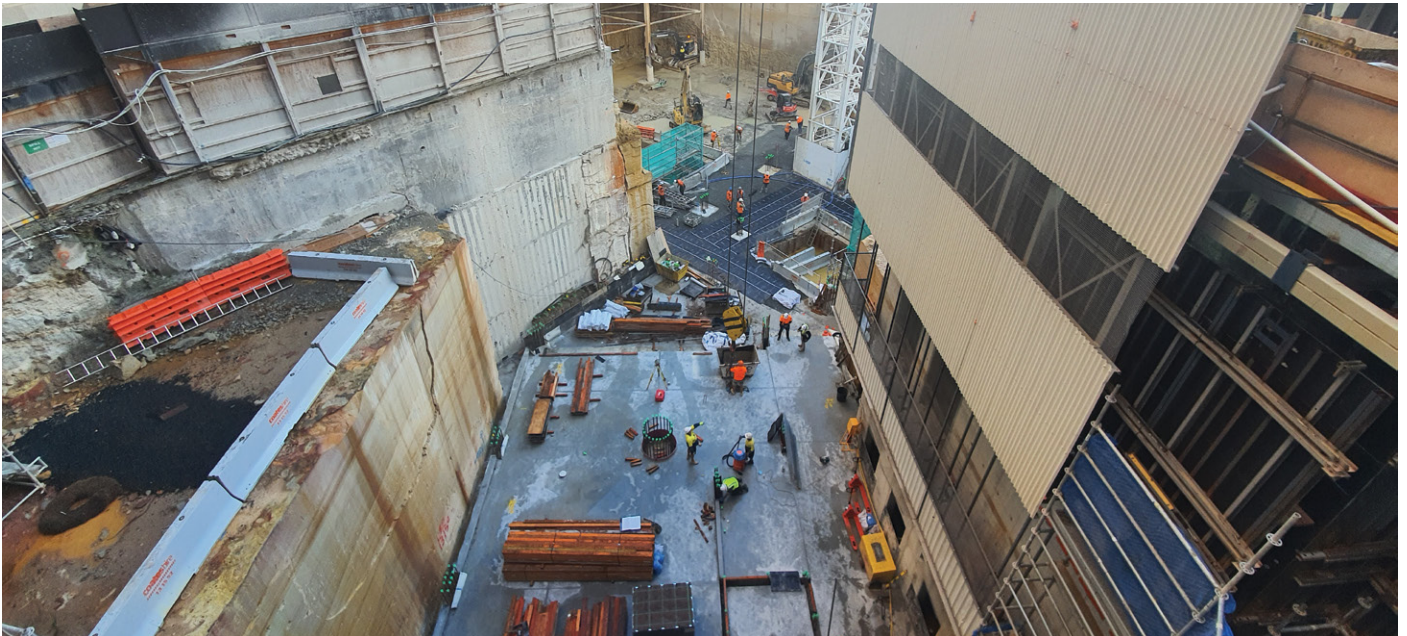
Sydney Pl.

 lendlease

Construction Progress

Our team has been working hard to achieve the following:

- Completion of the mid-rise Jumpform
- Completion of the low-rise Jumpform
- Completion of the Yellowblock rock extraction works
- Installation of our second tower crane
- Installation of the George Street work zone
- Completion of the detailed excavation
- Commenced inground services
- Commenced ground slabs
- Commenced suspended slabs
- Installed the two core hoists.



Upcoming Construction Activities April – June

In the next three months our team will be focusing on:

- Removal of the Pitt Street works platform
- Continuation of the concrete ground slabs
- Continuation of the suspended concrete carpark/ basement slabs
- Concrete pour cycles for the Jumpforms, lift lobbies and stairs
- Removal of the raking props to Pitt Street and Rugby Place
- Construction of Pitt Street electrical substation room

CONTACT US

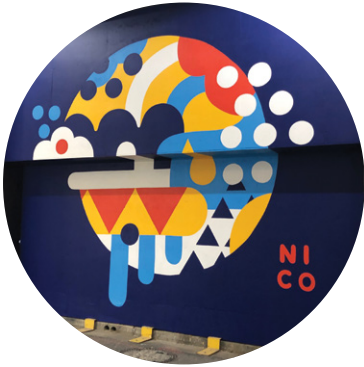
1300 092 646 | Community Information Line
sydneyplace@lendlease.com | www.sydneyplace.com

Sydney Pl.



Street Artists Shine Along Underwood Lane

Last month, Lendlease commissioned three street artists to bring new interest and colour to Underwood Lane as part of the City of Sydney's creative hoarding program. Nico, Jack Fran and Lauren Webster each brought their own style in responding to the site's history and urban environment.



Nico – is a contemporary artist and designer living in Sydney, Australia. His work explores the power of line, shape, and colour to impact humans emotionally. To see more of Nico's work, visit artofnico.com



Lauren Webster – is a Sydney based artist. She uses iconography to create deeply personal and site specific works that are imbued with symbolism and meaning. To see more of Lauren's work, visit laurenwebster.net



Jack Fran – is an Adelaide-based street and fine artist. His work is a dialogue that attempts to draw nature and city living together, illuminating the vast potential for imagination and creativity in contemporary living. To see more of Jack's work, visit [Instagram.com/_jackfran](https://www.instagram.com/_jackfran)

An artist summary panel of the existing works that form part of the Two Good Co. gender equity competition held last year will be installed in Underwood Street in the coming weeks. This means the community can learn more about the artists and their work on display around our site. We appreciate many of our neighbours are working from home so we will be featuring this detail on our new project website launching in the coming months.

Thank You for Helping us Shape the Future of Circular Quay

Thanks to everyone who completed our survey in February. Your views and ideas have helped us better understand what locals want to see in the Circular Quay precinct.



CONTACT US

1300 092 646 | Community Information Line
sydneyplace@lendlease.com | www.sydneyplace.com

Sydney Pl.



Façade Design Taking Shape

The Lendlease design team has significantly progressed the procurement and design process of the façade for Salesforce Tower Sydney with Foster and Partners. The façade design is inspired by the structural bracing of the building. The bracing is protruded externally to the façade line and creates a tree-like silhouette.

Façade Fun Facts

- One of the key features of the façade design is the beautiful full height glass scenic lifts on the south of the building.
- Approximately 8,100 individual façade panels will be incorporated in the overall design.
- During construction it is anticipated that the team will install 17 panels a day.
- 46,650m² of façade will be created for Salesforce Tower.



Construction Key Statistics to Date*

*Up to 3 April 2020

37,000 m³

Total quantity of excavated materials from site

Approximately

88 tonnes

of steel and 208m³ of concrete have been used in the foundations

Approximately

942 tonnes

of reinforcement and 3020m³ of concrete have been used in the Core structure

Next Quarterly Stakeholder Meeting Postponed

Our next quarterly meeting scheduled for May has been postponed. The safety and wellbeing of our people and the community is our highest priority. Our project and site teams are working collaboratively to manage COVID-19 and have implemented a series of proactive measures to minimise the risk of exposure to workers on our site and the surrounding public. During these challenging times, please feel free to reach out to our team if you have any questions regarding the Sydney Place project.

CONTACT US

1300 092 646 | Community Information Line
sydneyplace@lendlease.com | www.sydneyplace.com

Sydney Pl.

 **lendlease**