

SYDNEY PLACE

QUARTERLY UPDATE

April
2022

Sydney's tallest commercial building reaches its peak

As Salesforce Tower Sydney reaches its peak, the stunning 55-storey commercial tower is changing the skyline at Circular Quay. Designed by architects Foster + Partners, it will be Sydney's tallest office building, accommodating up to 5,500 workers.

After approximately 2.5 years of construction – throughout incredibly challenging times – the core of the building reached its peak in February this year. The typical building floors are expected to reach full height in the coming weeks. When the final slab is complete, the building officially 'tops out' and this will be marked with an official 'topping out' ceremony where a tree is placed on top of the building to mark an ancient European ritual to appease the tree-dwelling spirits displaced in its construction.

Works are progressing with internal fit out works well underway and around 3/4 of the façade panels have been installed. The tower, located on George Street within Sydney Place, is targeting completion around Quarter Three this year.



Salesforce Tower Sydney core reaches its peak of 265.8m in February 2022

It has already been awarded a Platinum WELL rating and is targeting 6-star and 5.5 star NABERS Energy ratings. At the base of the office tower, the precinct will include retail, community spaces and intimate laneways, all designed to enhance the daily experience of workers and visitors.

Welcome to the tower

The tenant community continues to grow with The Executive Centre, Wellington Management and Jones Lang LaSalle signing on to join anchor tenant Salesforce and Greenhouse by Investible.

Right: Salesforce Tower reshaping the Sydney skyline



CONTACT US

1300 092 646 | Community Information Line
sydneyplace@lendlease.com | www.sydneyplace.com

Sydney Pl.



Construction snapshot

Over the coming months, construction activity will focus on:

- Completion of skysrise structure (Level 56 slab)
- Removal of all structure screens
- Removal of the tower cranes
- Removal of the external twin hoist
- Internal fitout and finishes works continue
- Completion of the tower façade
- Façade works to commence on Jacksons on George
- Façade works to commence on the Plaza Building
- Public domain works to continue in Underwood Lane and Rugby Place

Construction Facts*

*Up to April 2022



Approximately

7,000

Structural Steel members have been installed to date

Approximately

41,000m³

of Concrete has been poured on the project

Approximately

8,300

Tonnes of steel reinforcement installed

Approximately

5,600

Glazed façade panels have been installed to date

There are just over

2,000

Glazed façade panels left to complete

Managing construction work

All major construction projects like Salesforce Tower Sydney comply with strict environmental and planning controls. During the construction of the Tower, we continue to work closely with all stakeholders to coordinate and communicate construction work underway.



Left: Finishes work on Level 6

Site Shut Down

The Sydney Place construction site will be closed as follows:

- From Friday 15 April and reopen on Wednesday 20 April 2022
- From Friday 22 April and reopen Wednesday 27 April 2022

During the shutdown period, security will be in place to monitor the site

CONTACT US

1300 092 646 | Community Information Line
sydneyplace@lendlease.com | www.sydneyplace.com

Sydney Pl.



New life for an old favourite

A visual spectacle of Sydney Place, Jacksons on George will be reborn by DTL Entertainment Group with hospitality visionary Maurice Terzini as Creative Director. DTL Entertainment is led by hospitality entrepreneurs Paul Ford and Steve Bannigan and publican Michael Broome.

Set over three levels, the social destination will feature a modern and sophisticated ground floor pub, a restaurant and wine bar on level 1 and a sun-drenched rooftop terrace and cocktail bar. This new generation pub and flagship Sydney venue will deliver consistently activated series of spaces, with unique offerings that evolve throughout the day, providing a remarkable dining and drinking cultural journey.

Designed by local, award-winning architects Studio Hollenstein, Jacksons on George draws its inspiration from the rich history of the site. The form of the building



Artist impression of Jacksons on George

echoes the hull of a ship, the shimmer of the water on the Sydney Harbour and the classic Australian pub tile, whilst a unique ceramic facade reveals aspects of the Sydney Place precinct and city surrounds.

Jacksons on George will be a landmark building for Sydney and is scheduled to open in early 2023.

“Leveraging our global expertise in placemaking and creating communities that thrive, we’re thrilled to embark on this next step for the precinct by re-inventing the iconic Jacksons on George as an around-the-clock destination – bigger and better than ever before.”

Simon Van de Velde,
Head of Leasing, Lendlease



Artist impression of Jacksons on George and the plaza connecting to George Street

Public artwork with a twist

Sydney Place will be home to a new piece of public art designed by Chinese-Australian artist Louise Zhang. Zhang is a multidisciplinary artist whose practice spans painting, sculpture and installation. Her work is inspired by traditional Chinese symbolism and she expresses this in a modern way that is influenced by the confluence of cultures over time.

The artwork will feature in a passageway beneath the office tower lobby which will provide a pedestrian connection between Underwood Street and Rugby Place.

Right: Sneak peek of Zhang’s public artwork – coming later this year!

Two archways and a series of cloud-shaped, ceiling mounted sculptures. The material palette is bright with neon accents against a dark cladding.

Fabrication of the artwork has commenced, and the install will be completed in mid-2022.



CONTACT US

1300 092 646 | Community Information Line
sydneyplace@lendlease.com | www.sydneyplace.com

Sydney Pl.



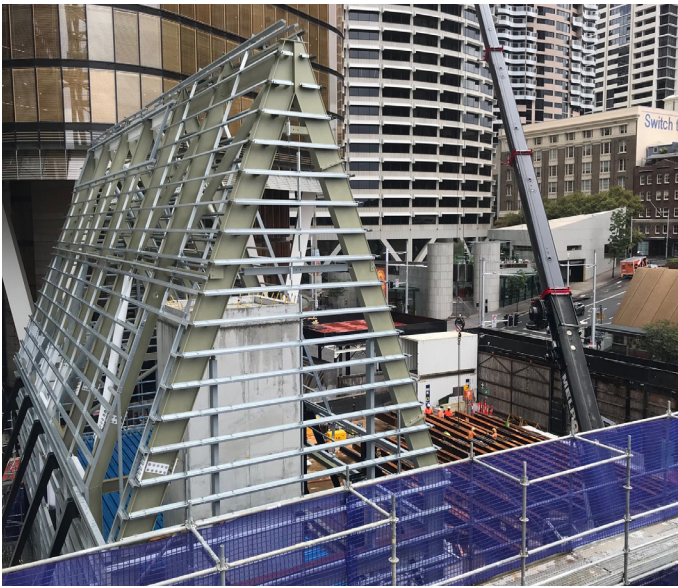
Unique Plaza Building is underway

At the heart of Sydney Place will be the public plaza – the first plaza on George Street in over 50 years. It will be framed by a truly unique community building, designed by esteemed British architect Sir David Adjaye in partnership with Australian Indigenous artist Daniel Boyd.

The Plaza Building is starting to take shape with the concrete lift core complete and the steel structure in place. The decking and ceiling system is in place with the roof beams complete. The façade is underway and it is anticipated that the artwork installation will commence in May.

This building will feature one of the largest First Nations artworks in the city – a perforated steel canopy that will suspend 20 meters above the ground. The canopy forms part of The Plaza Building and reflects the commitment to recognising First Nations Peoples in the public domain. Filtering light onto the space below, the canopy will shelter and unite community along with providing a place to pause amongst the city's vibrancy.

At completion the Plaza Building will accommodate a wide range of uses and is designed to evolve over time based on the needs of the local community.



The Plaza Building taking shape in March 2022



Artist Impression of the completed building



The Plaza Building and plaza construction progress in March 2022



Artist Impression of the plaza and connection to George Street

CONTACT US

1300 092 646 | Community Information Line
sydneyplace@lendlease.com | www.sydneyplace.com